



A Sony Group Company





Towards a recycling-oriented society

We, Green Cycle Corporation, operate recycling business of used home appliances appropriately and attractively. As a member of Sony Group Companies, we also contribute to creating a recycling-oriented society for global environmental conservation by establishing recycling life cycle for products.

Aiming to be a long lasting company, all Green Cycle employees continuously make effort to create a “good company” that is recognized by local community and that is worth working for.

Mission

To be a first class, long lasting recycling company that continuously contribute to the establishment of a recycling-oriented society as well as protecting local community and the future of Japan.

Company Profile

- **Company Name** Green Cycle Corporation
- **Established** July 28, 1998 (operated Oct. 24, 2000)
- **Address** 13 Showa-cho, Minato-ku, Nagoya, Aichi 455-0026, Japan
- **Capital** 350 million yen
- **Premises** Land area : 22,526㎡
Total floor space : 18,992㎡
- **Business Description** Recycling of used home appliances (four types)
(Recovery of metal (iron, copper and aluminum), plastics, glass and CFCs)

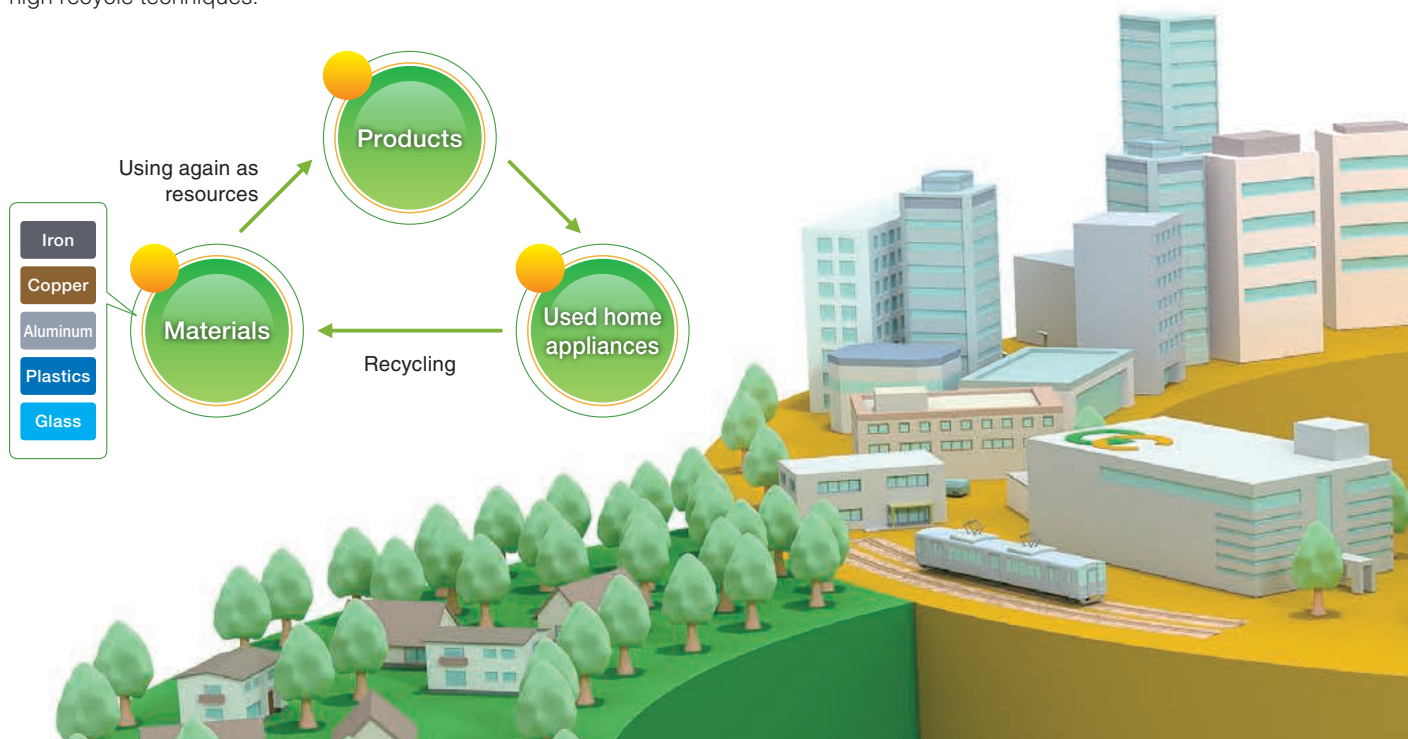


Policy of Green Cycle

Home appliances such as TVs and Refrigerators are used over many years. Even if it is broken or replaced by new one, it would never be trash.

By recycling, we can use materials such as iron and plastics from used home appliances, as the new resources for new products.

We continuously make effort to recycle used home appliances to become new resources as much as possible with our high recycle techniques.

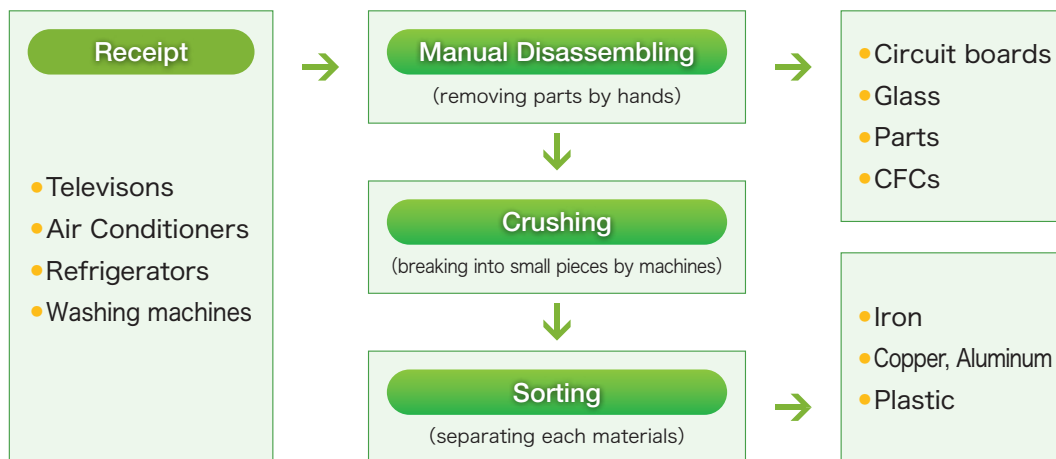


Recycling Process Flow in Green Cycle

We operate recycling of four designated types of home appliances (TVs, Air Conditioners, Refrigerators and Washing machines) based on the "Home Appliance Recycling Law".

It consists of two processes, disassembling by hands and crushing/sorting with large machines depending on each material.

Combining those 2 processes, we achieve safe and efficient recycling and effective utilization of resources.



Manual disassembling

Used home appliances are disassembled manually and parts such as circuit boards, power cords and motors are taken out.

In term of manufacturers and models, since used home appliances collected from domestic household are different, hence the disassembling procedures are different.

Therefore, skilled recycling workers are necessary to achieve accurate separations.

Additionally, we surely recover harmful chemical substances such as CFCs and mercury that contained in parts, and handle them appropriately.

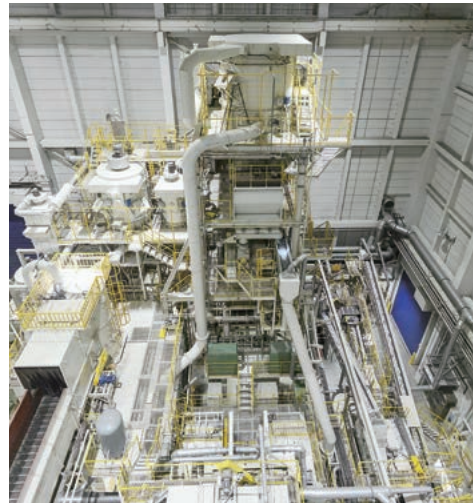


Crushing

After taking out the parts such as circuit boards, remained casings are crushed into small pieces by large machines that look like a giant food cutters.

By making them smaller, materials become apart from each other and easier to be sorted by machines.

Even a refrigerator is crushed shortly.



Sorting

Just after crushing, various materials are mixed together and there is no value as resources.

By using mechanical sorting based on characteristics of each material, iron, non-ferrous metals and various plastics can be separated and become high value resources.



Toward advanced recycling

Active work for everyone

Because home appliances are large and heavy, recycling work is a heavy labor.

That is why it had been work mainly for men with physical fitness.

In order for everyone, including women and elderly people, to be active in the recycling operation, we have been trying to improve the operation in Green Cycle through the automatization and/or the development of special tools.



Improving working conditions

There is so much dust and dirt in used home appliances due to usage over many years.

During the disassembling process, dirt would scatter and the workers and work area might become dirty.

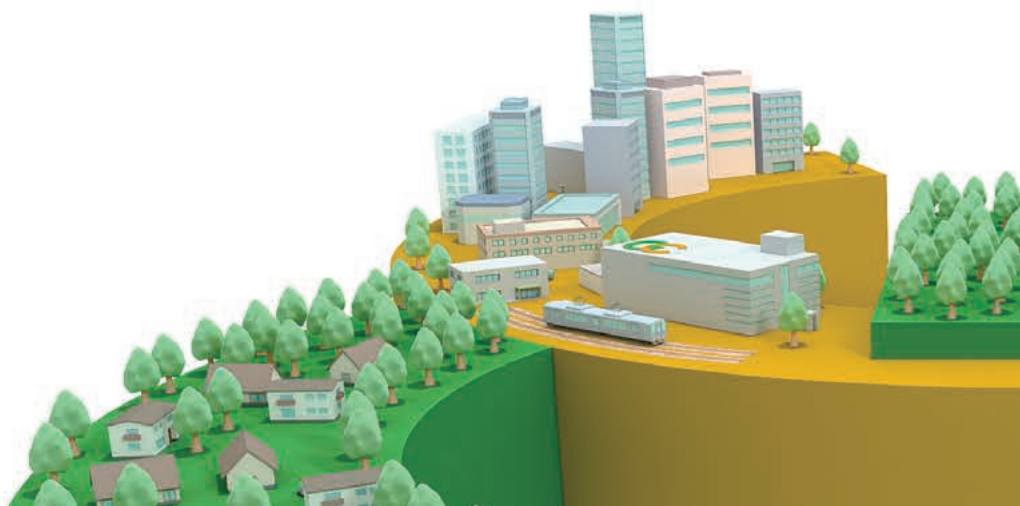
Therefore before disassembling, we remove dust and sand in the used home appliances to prevent from bringing them into the work area.

And all of the working benches are able to keep in clean conditions by having vacuum collectors for the dust flying up while disassembling.



Toward future recycling

We utilize recycling know-how for next product creation, by cooperating with Sony to design next products. We consider “good things and bad things for recycling” with product designers to create products that are easier to recycle. The effect of recycling-friendly design will only reflect when the product is disposed and recycled. That would be more than 15 years later, however we have been working together for “a better recycling in the future” at present.



Activities for environment

Recycling thoroughly

We work on the problem of resource depletion and environmental destruction due to mining development. By recycling thoroughly, we circulate resources used in products and contribute on reducing the mining of new resources.

And we surely recover and appropriately treat harmful chemical substances, such as CFCs that cause ozone depletion and global warming, lead and/or mercury affecting the human body and the environment.



Recovery of CFCs

Utilizing the gift from nature

As a company related to environmental conservation, we utilize the gift from nature such as sunlight and rainwater. In term of energy usage in our factory, we use renewable energy, solar power generation from our own solar panels. Additionally, rainwater is also used for water conservation. And we also promote greening in the factory and creating a place for birds and insects to gather for maintaining biodiversity.



Solar panels on the Green Cycle factory rooftop

The important of appropriate recycling

We have been holding plant tours for the public, especially for the local residents and students, in order to let them know how home appliance recycling is being done.

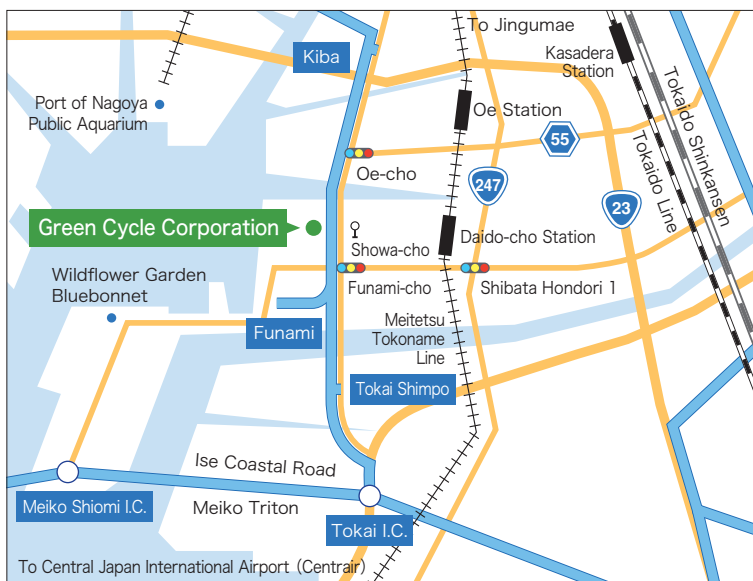
In our plant tours, we introduce the recycling system for used home appliances, the effect of recycling and improper recycling by illegal sectors, to encourage appropriate recycling.

Conveying the importance of the appropriate recycling, we strive to help build a society where all waste would be recycled appropriately.



Green Cycle Corporation

13 Showa-cho, Minato-ku, Nagoya, Aichi
455-0026, Japan
TEL. +81-52-613-5701 FAX. +81-52-613-5703
<https://www.greenc.co.jp>



This company guide is made from FSC® certified and controlled materials.
The ink used for printing is a highly biodegradable vegetable oil made from environmentally-friendly ingredients with few VOCs (volatile organic compounds)

